

## Technical Specifications

SSID: CLKDevices or WIFI OBD

IP: 192.168.0.10

Subnet: 255.255.255.0

Port: 35000

Range: 50 ft (Line of sight)

Antenna: Internal

Power Consumption: 0.75 Watts (With Power Switch)

Wifi Standard: 802.11a/b/g

Operating Temperature: -15 to 100 Deg Celsius

Plastic: Automotive Grade

Physical Dimensions: 2.75 x 1.25 x 1.2 inches

## Description

**CLKDevices or WIFI OBD AUTO CHECKER** is capable of communicating with vehicles which adopt following protocols:

ISO 9141

ISO 11898(aka. CAN)

ISO 14230(aka. KWP2000)

ISO 15765(aka. CAN)

SAE J1939

**CLKDevices or WIFI OBD AUTO CHECKER** is able to detect and interpret these protocols automatically. It also provides support for high speed communications and a low power sleep mode. It use AT commands to communicate with a host device (PC, notebook, iPhone, iPod touch, iPad and so on). There are plenty of software packages available, which are fully compatible with **CLKDevices or WIFI OBD AUTO CHECKER**. Some of them have pretty useful features, such as engine running parameters monitoring, DTC reading and clearing, MPG meter, etc. You can even write your own software on a specified hardware platform if you wish, because the AT commands are fully documented and very well explained. **CLKDevices or WIFI OBD AUTO CHECKER** is measuring only 2.7 x 1.25x 0.9 inches, and it comes attached with a 6 ft OBDII cable for easy installation. It also comes included with a power switch built-in to prevent the need for having to constantly disconnect your unit from the OBDII port. **It is compatible with 1996 and later vehicles.** Connecting to your iPhone / iPod touch /iPad is made by WIFI connection in adHoc mode.

Elder OBD compatible vehicles has a sticker indicates that the vehicle is OBD compatible. Model year 1996 and newer vehicles are compliant by default, and will not have this sticker.

Following are some of the parameters which could be read from the vehicle.

Vehicle Speed

RPM

Fuel Consumption\*

Engine Coolant Temp

Fuel Pressure

Calculated Engine Load

Throttle Position

Intake Manifold Pressure

Air Intake Temp

**FOXPDF WORD TO PDF CONVERTER**  
<http://www.foxpdf.com>



**TRIAL  
VERSION**

Timing Advance

Mass Air Flow

Fuel Level

Barometric Pressure

EVAP System Vapor Pressure

Fuel Trim

\*note: Your vehicle may not support all above parameters. How many parameters you can get is depended on the vehicle manufacturer's implementation.

## Vehicles supported

Our device works on all 1996 to 2010 cars and light trucks sold in the United States, including:

Acura	Daihatsu	Isuzu	Mercedes	Porsche	Smart
Alfa Romeo	Daimler	Jaguar	Mercury	Regal	Subaru
Ariel Atom	Dodge	Jeep	MG	Renault	Suzuki
Aston Martin	Ferrari	Kia	Mini	Rolls-Royce	Tesla
Audi	Fiat	Lamborghini	Mitsubishi	Roush	Toyota
Bentley	Ford	Lancia	Nissan	Rover	Triumph
BMW	Geo	Land Rover	Oldsmobile	Saab	TVR
Buick	GMC	Lexus	Opel	Saleen	Vauxhall
Cadillac	Holden	Lincoln	Pagani	Saturn	Volkswagen
Chevrolet	Honda	Lotus	Panoz	Seat	Volvo
Chrysler	Hummer	Maserati	Peugeot	Scion	Yugo
Citroen	Hyundai	Mazda	Plymouth	Shelby	
Daewoo	Infiniti	McLaren	Pontiac	Skoda	

Some 1994 and 1995 models are also supported. To see if your vehicle is compliant, pop the hood and look for this sticker:



Compatible Software and Features:

**What features you can have depended on what software you install on iPhone /iPod touch /iPad/ PC.**

There are a lot of commercial or free software. The features of the software differ from one another. User should choose his own software by his preference. For more details about the software, please consult the software vendors.

**FOXPDF WORD TO PDF CONVERTER**  
<http://www.foxpdf.com>



**TRIAL  
VERSION**

Where can I get the software?

You can log on to the apple application store to get your commercial/free software.

There is a freeware in the CD-ROM comes along with the device. You can use this piece of software to config and test the

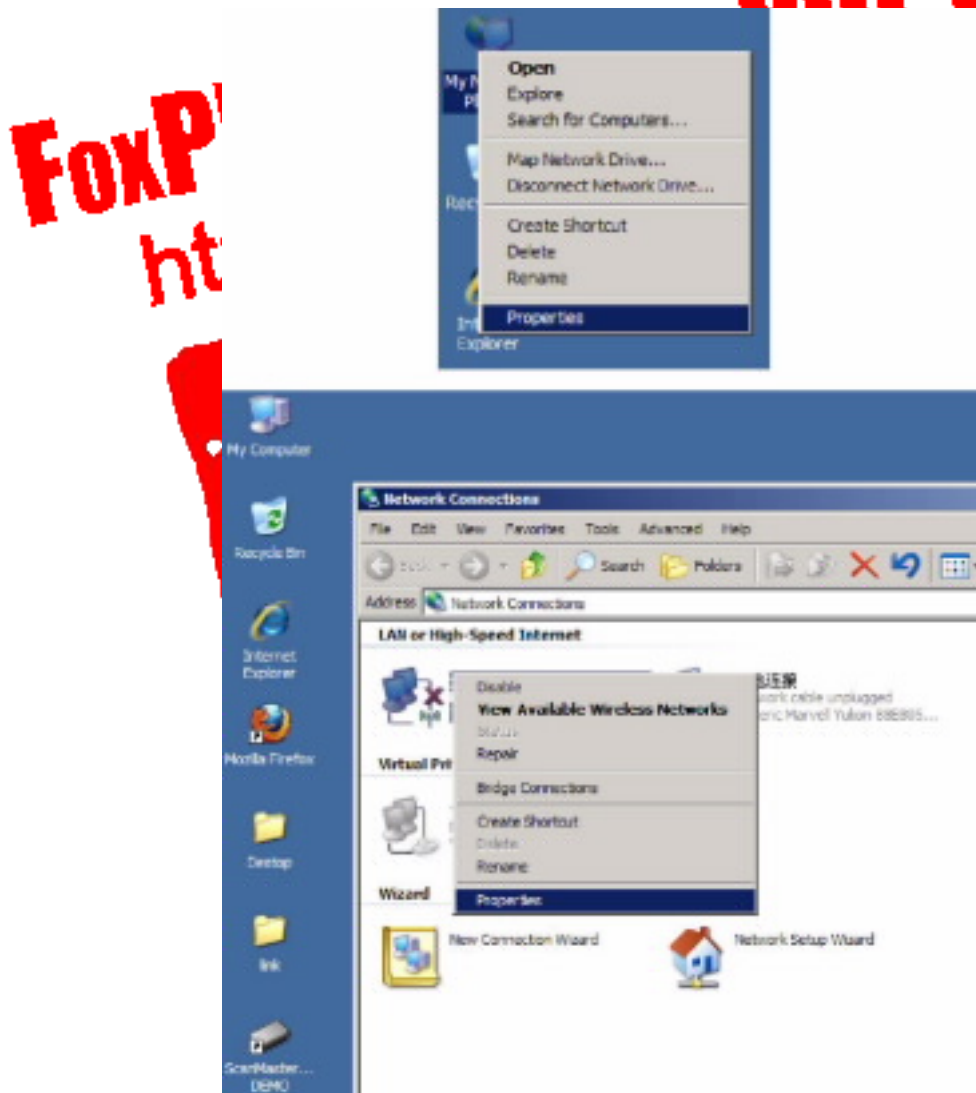
**CLKDevices or WIFI OBD AUTO CHECKER.**

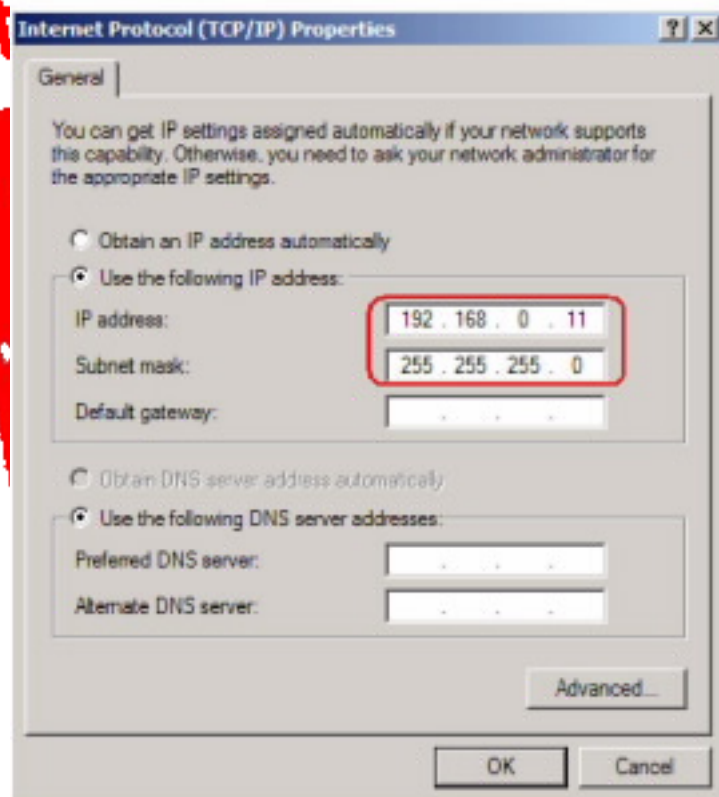
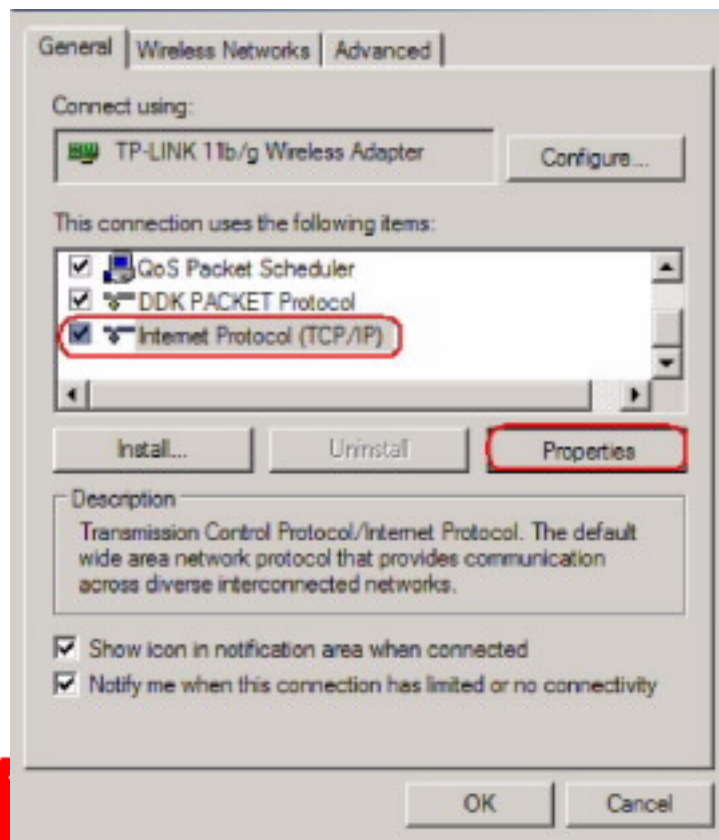
After the installation of **ScanMasterELM\_DEMO\_2.0.101.65**, there would be a shortcut on the desktop.



You need to config your PC or cellphone before you can use this software.

For example, on a PC you should follow the steps shown in the pictures below:





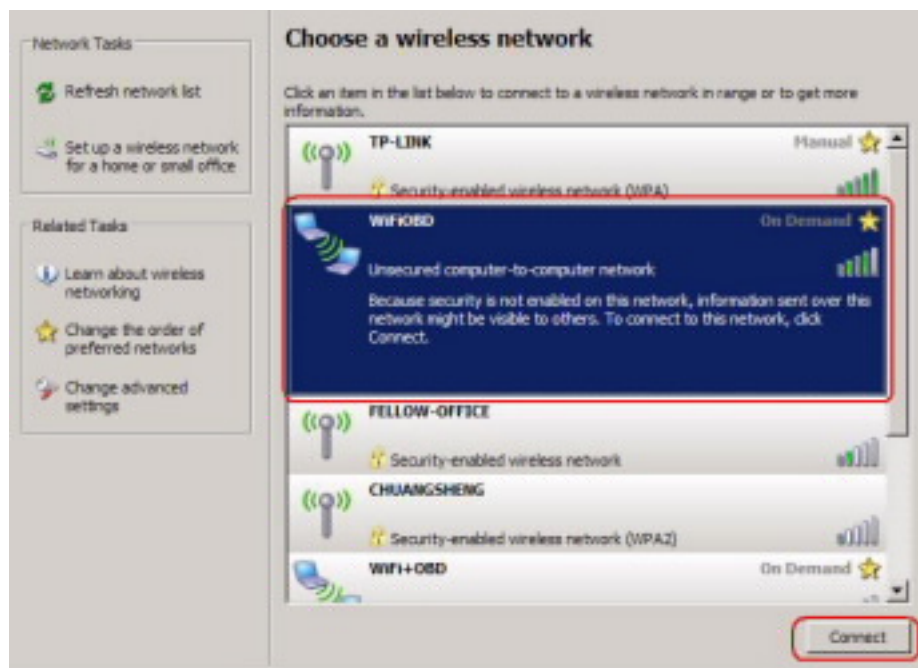
IP address setting.

IP: 192.168.0.11~254

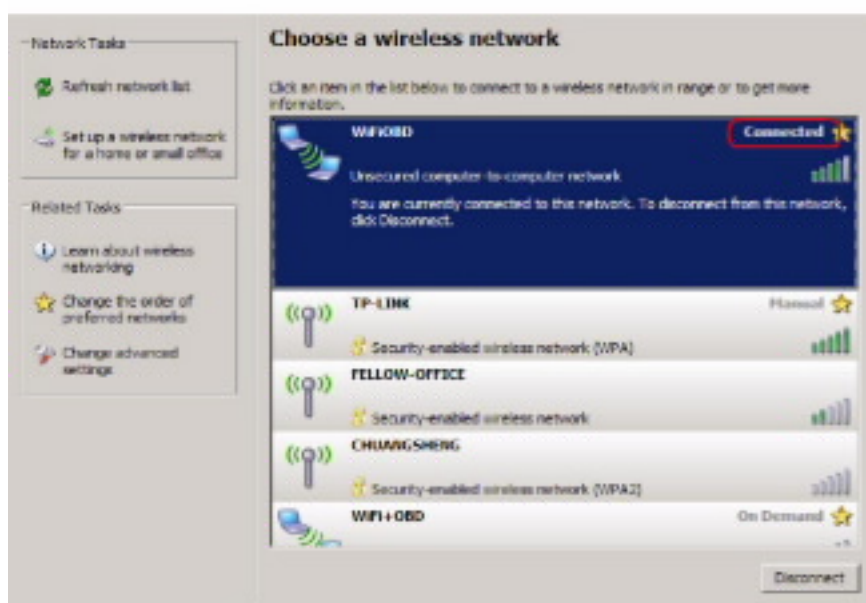
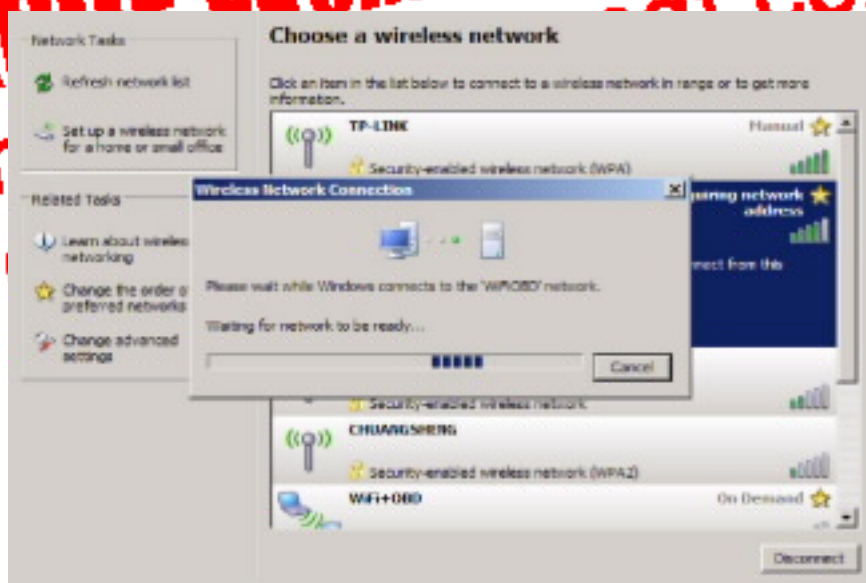
Subent mask : 255.255.255.0



After this, click **OK**. You can find the **WiFiOBD** device in the window shown below.



Click **Connect** to connect your PC to WiFiOBD.

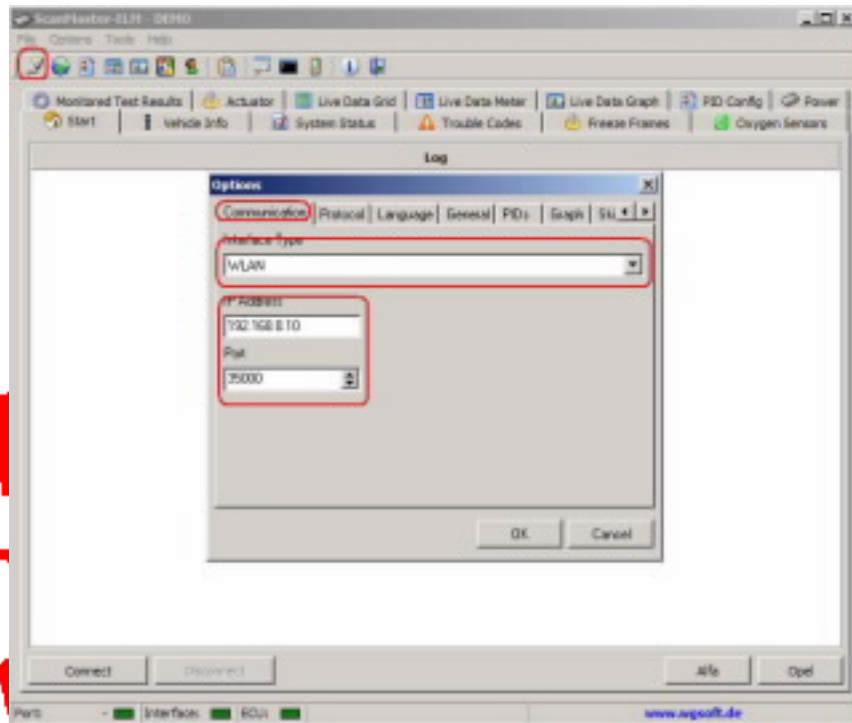


Now the configuration of your PC is done. You can start to use the software.

## Usage of the ScanMaster-ELM:

Double-click the **ScanMaster-ELM DEMO** icon to start it.

You may need to config it as shown below :

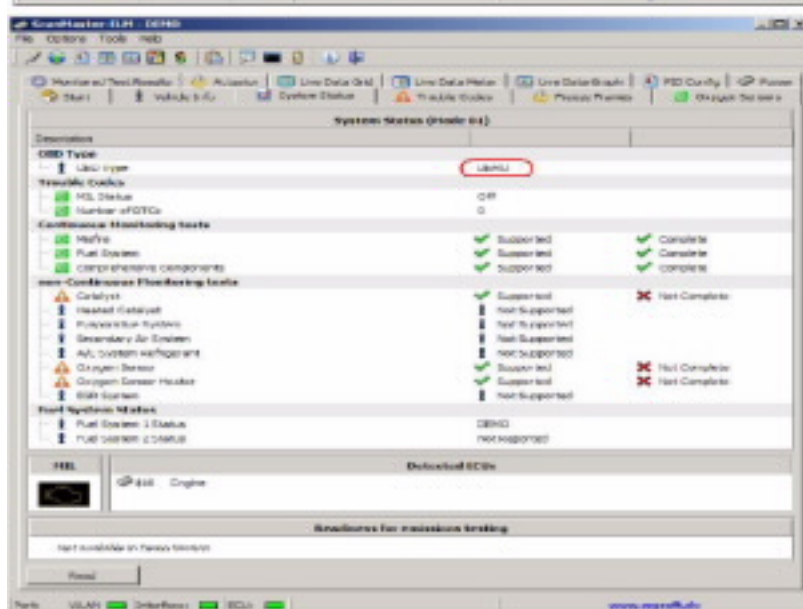
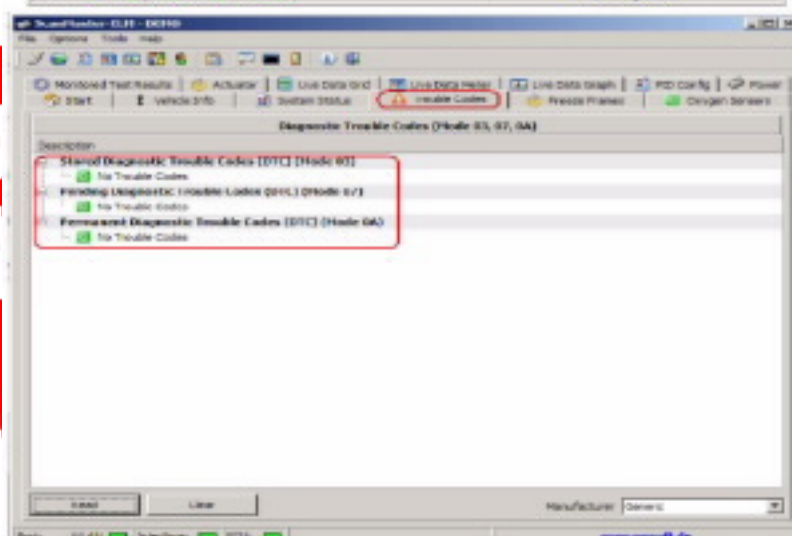
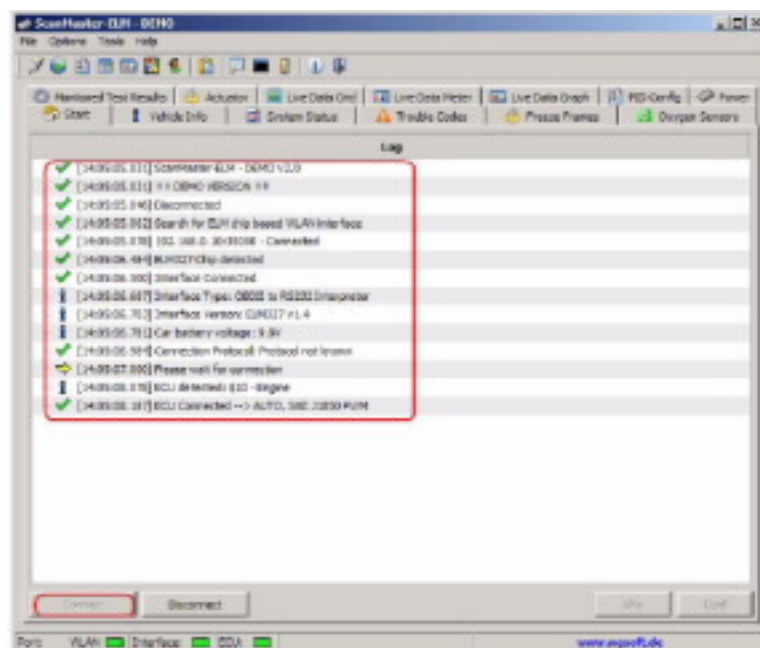


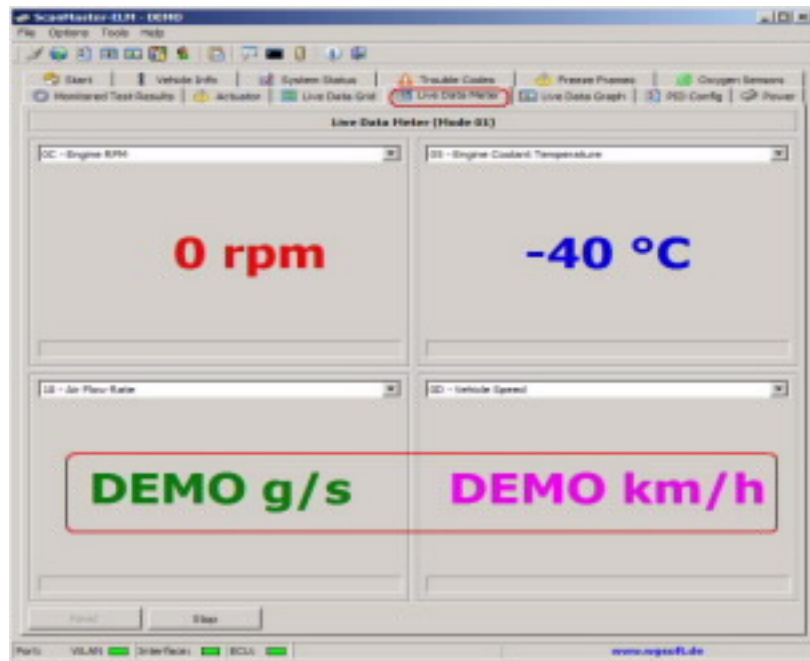
Click the  button, choose **WLAN** in the drop list which resides in the tab named **Communication**

Enter 192.168.0.10 as the IP address and 35000 as the port number. Click **OK**. Now the software is ready to use.



These are what you'll see when the software is running:





Note: This piece of software is a demo version. It only provides some basic features. If you want all the features, you can buy it from <http://www.ngssoft.com>

## Using Iphone 4&IPAD&IPOD software setting:

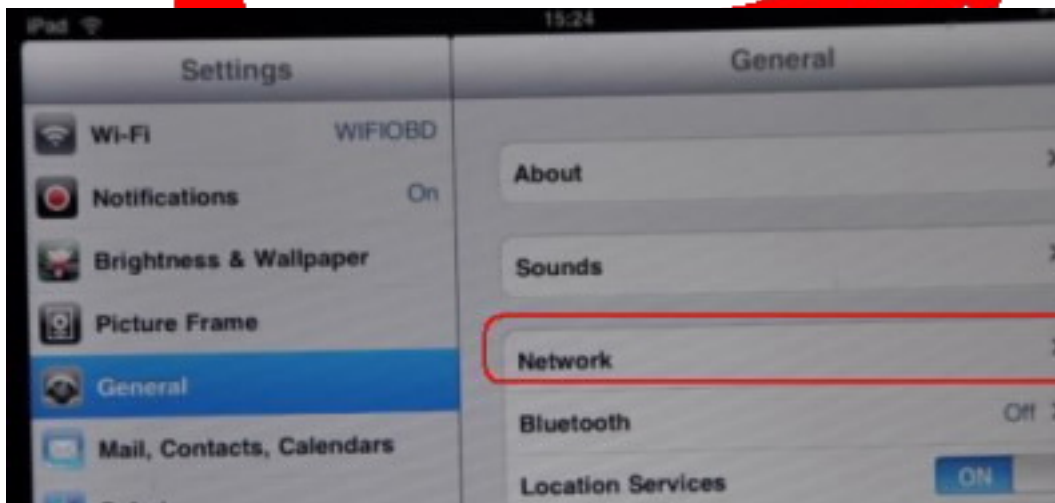
Note: After you get the applications, you will have a detailed user manual, which is provided by the application vendors.

Here are a few examples to config the application.

You need to change the WIFI settings(IP address and net mask) of your **Iphone 4/IPAD/IPOD** before you try to connect your device to **WI-FI OBD AUTO CHECKER**.

Here is a step-by-step example :

Click **Settings ->General->Network**

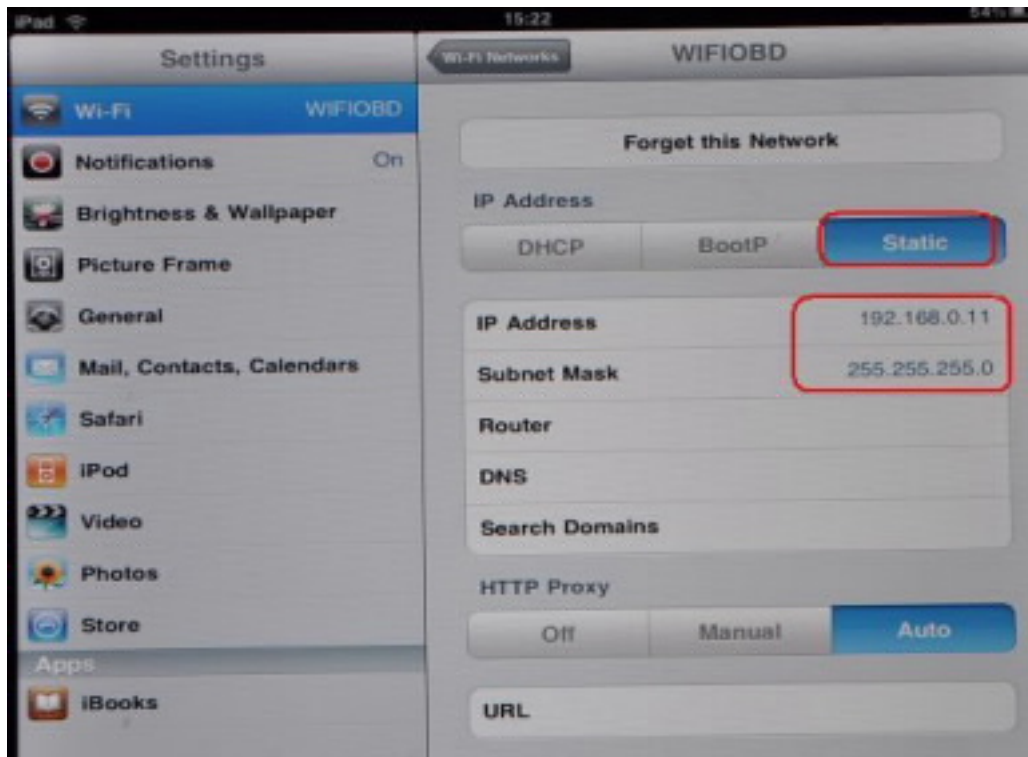


Select **Static**, change the IP address to 192.168.0.11 (any value between 192.168.0.11~192.168.0.254 will work)

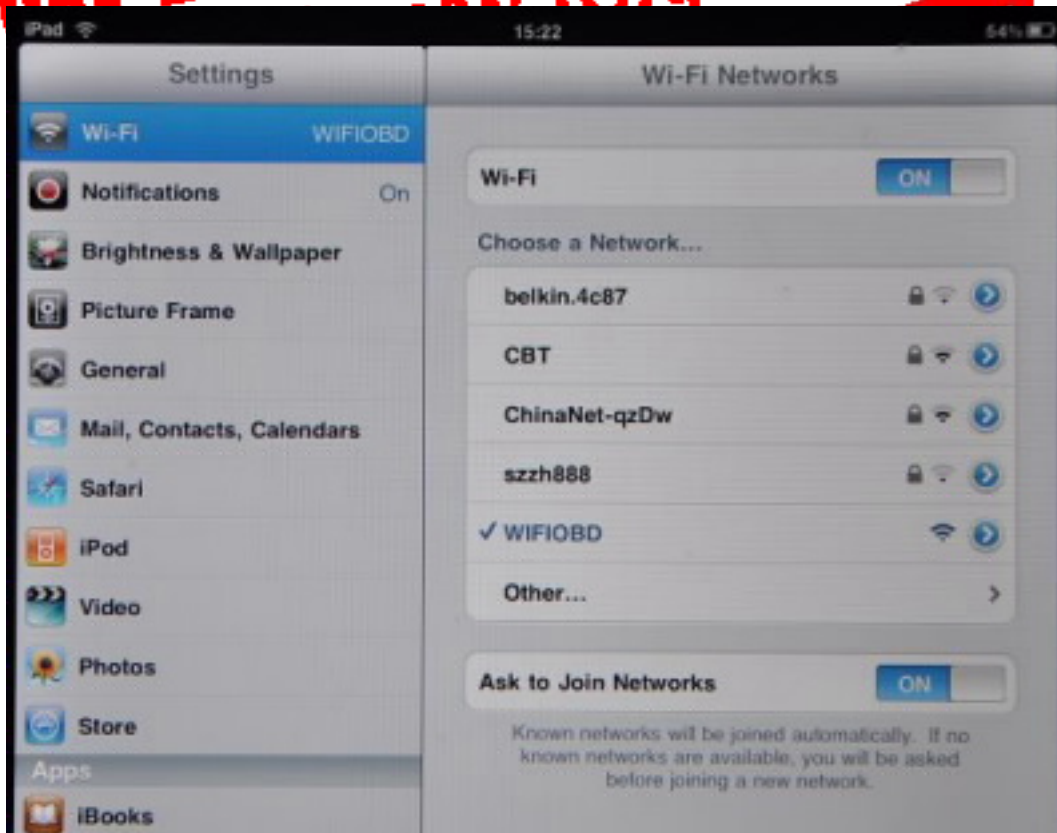
**FOXPDF WORD TO PDF CONVERTER**  
<http://www.foxpdf.com>



**TRIAL  
VERSION**



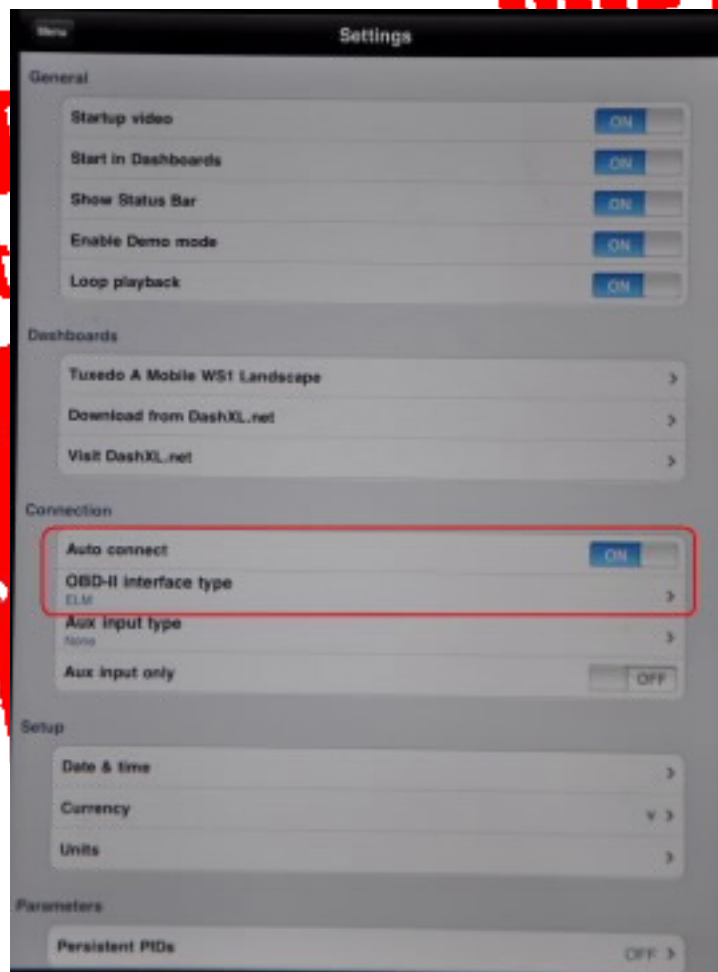
Scan for the WiFiOBD device, and join the network.



You may need to config the software before you can use it. Let's take **DashCommand** as an example



After start, go to the page named **Settings**



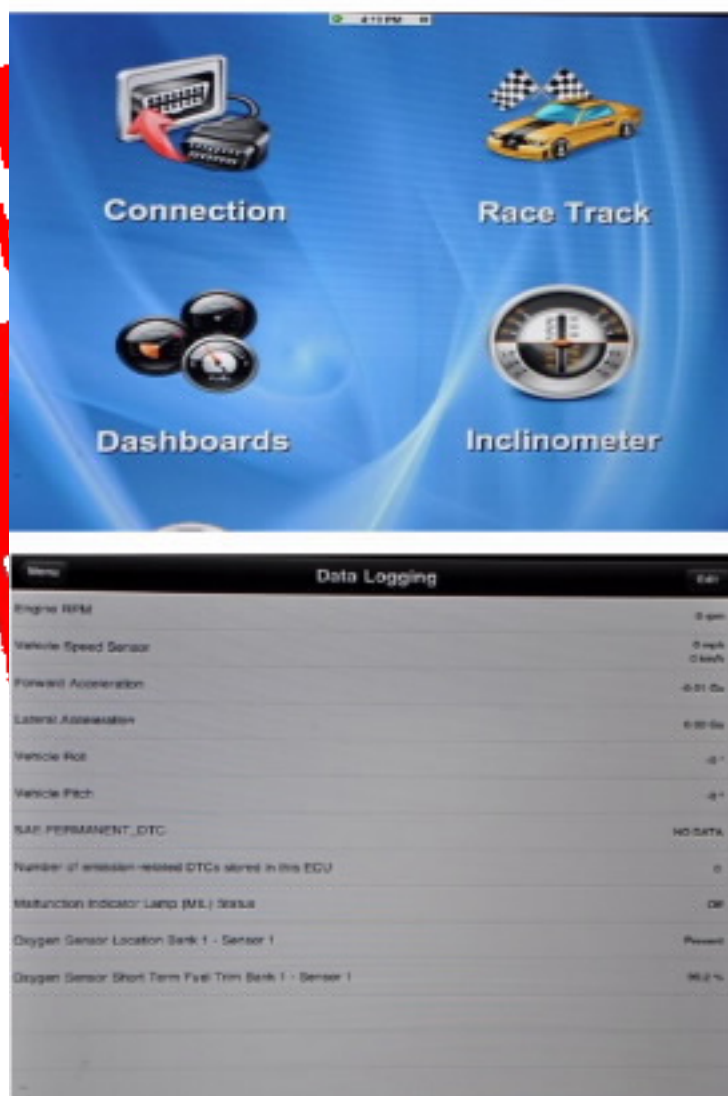
Change the settings according to the picture :  
Auto connect: **ON**

OBD-II Interface Type : **ELM**

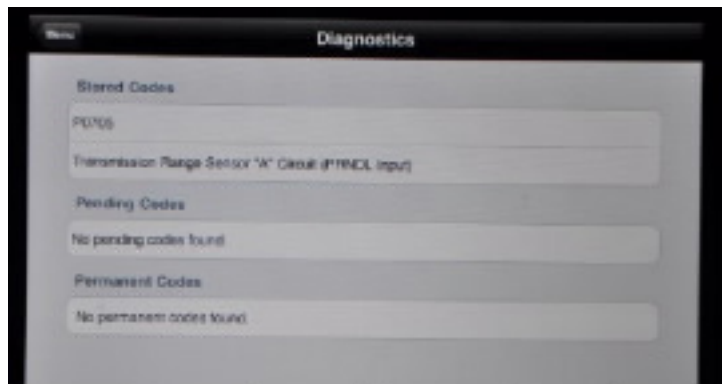
Save the settings and you can start to use it.



These are what you'll see when the software is running:



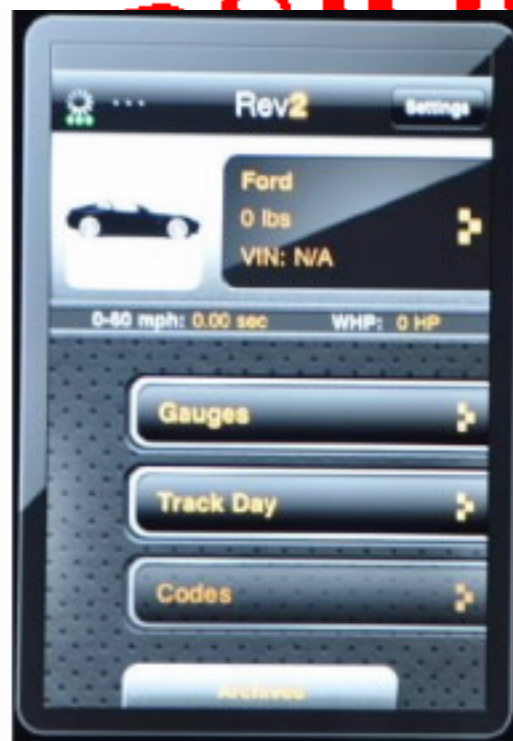


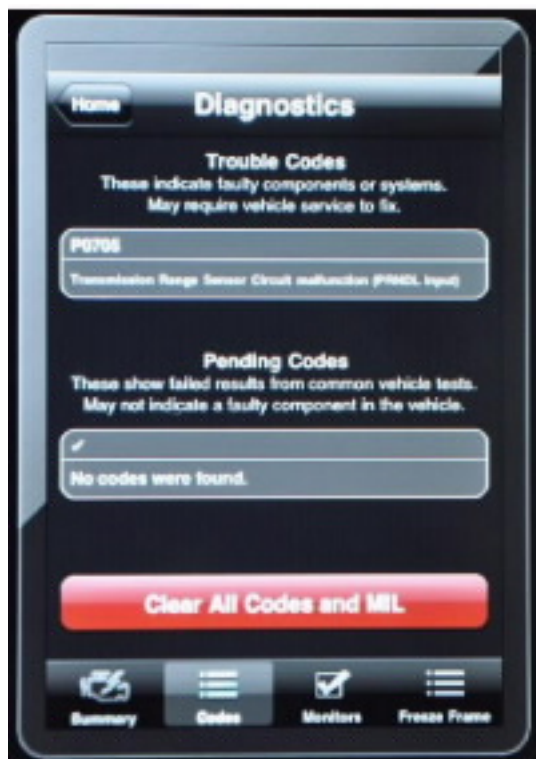


Here are the instructions to config **Rev2** for **iPhone / iPod Touch**

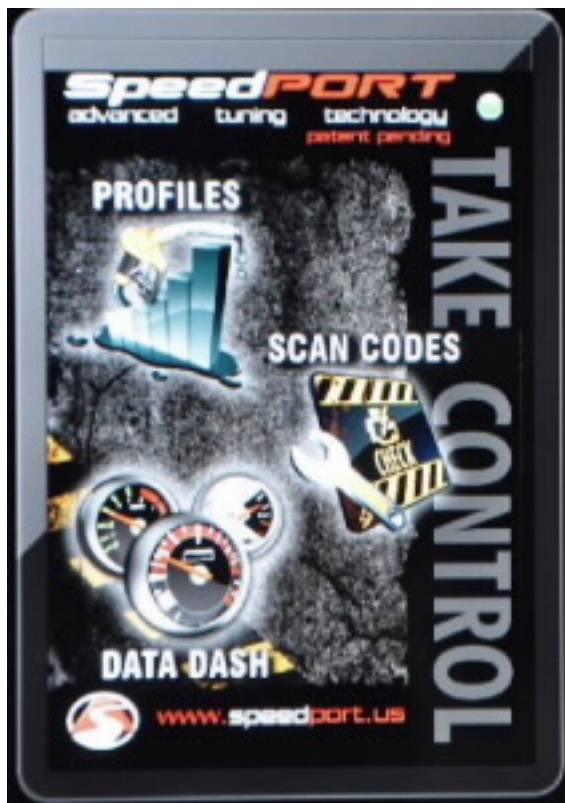
Start the application and enter the **Global Settings** page, select KiWi Wifi as your hardware device.

Click **Custom**, enter 192.168.0.10 as the IP address and 35000 as the port number.





You don't need to config **SpeedPort**, just run it after you have it installed on your device.



ENTER

ENTER